

Phase diagrams

Discussion questions

the shape of the two-phase liquid-vapor region in the phase diagram (usually a phase diagram). The closer the liquid and vapor lines are to each other, the more difficult. See Figure 6.15 of the text. But the presence of an azeotrope could prevent the separation from being achieved. Incomplete miscibility of the components at specific compositions can affect the number of plates required.

6.1(b).

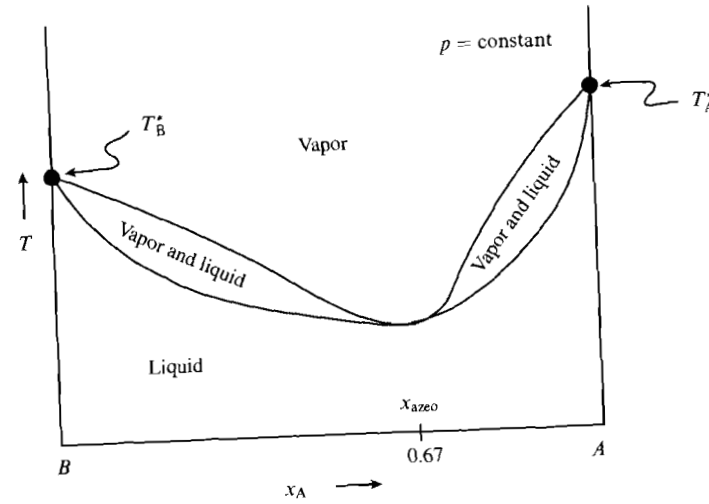


Figure 6.1(b)

6.6

See Figure 6.2.

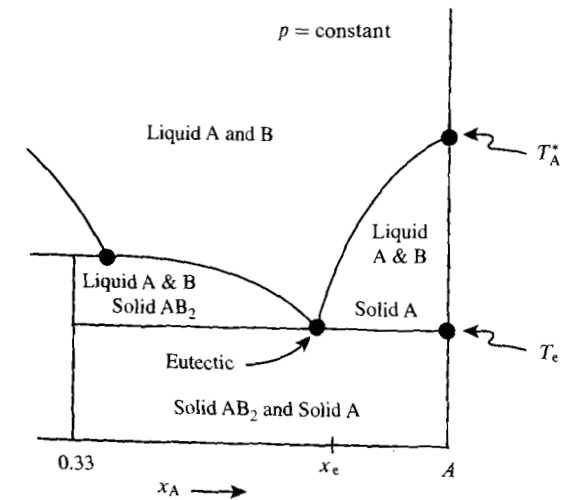


Figure 6.1(a)

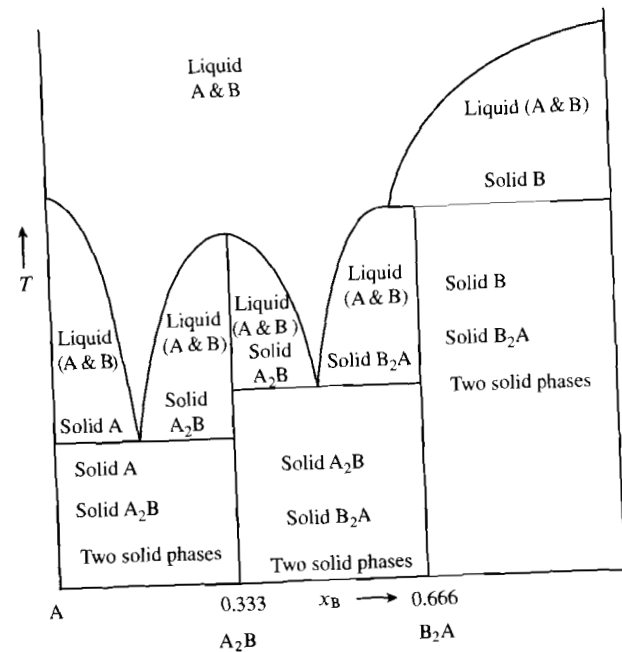


Figure 6.2